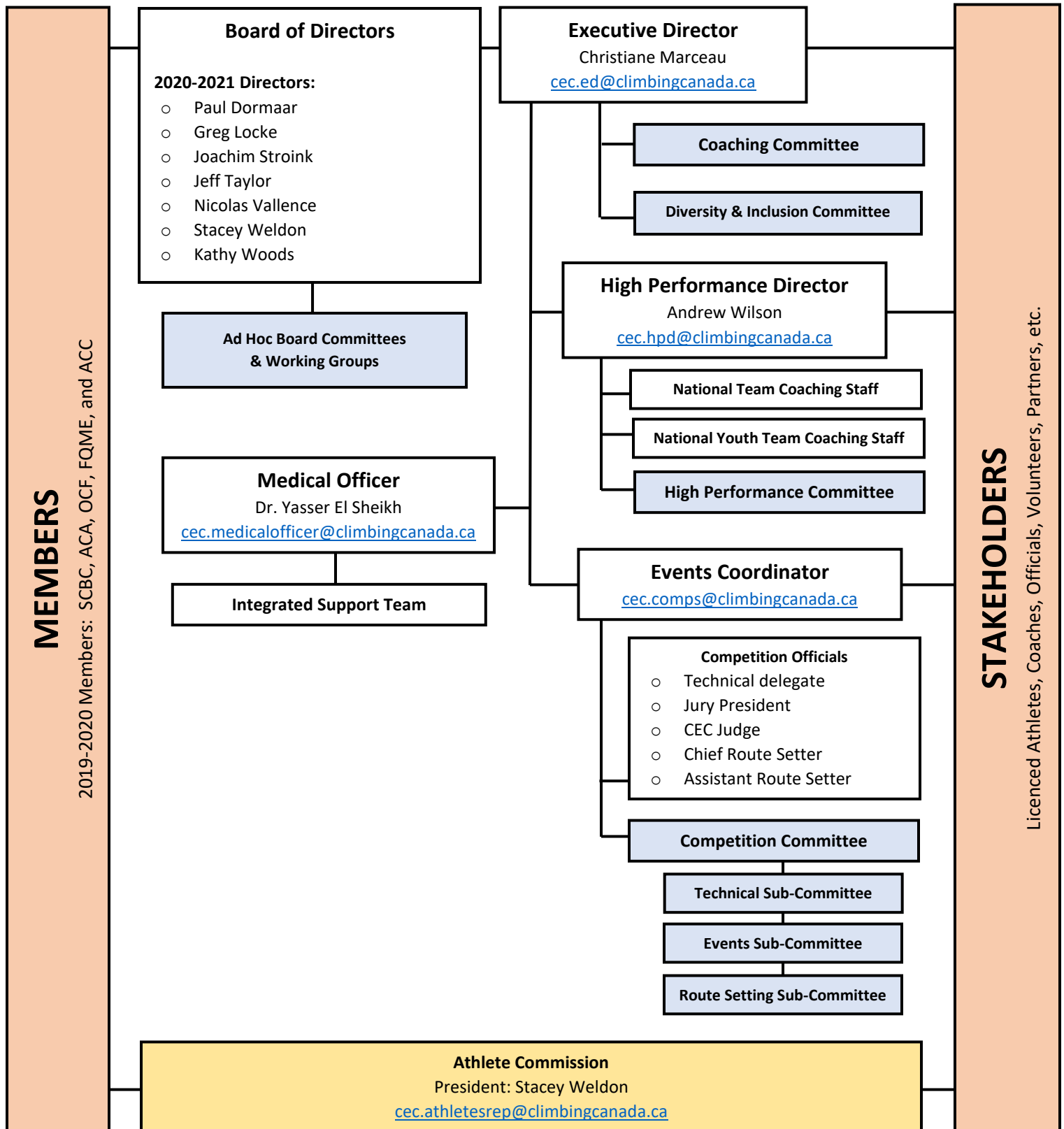




## Climbing Escalade Canada – Organizational Chart



### Board of Directors

#### 2020-2021 Directors:

- Paul Dormaar
- Greg Locke
- Joachim Stroink
- Jeff Taylor
- Nicolas Vallence
- Stacey Weldon
- Kathy Woods

Ad Hoc Board Committees  
& Working Groups

### Medical Officer

Dr. Yasser El Sheikh

[cec.medicalofficer@climbingcanada.ca](mailto:cec.medicalofficer@climbingcanada.ca)

Integrated Support Team

### Executive Director

Christiane Marceau

[cec.ed@climbingcanada.ca](mailto:cec.ed@climbingcanada.ca)

Coaching Committee

Diversity & Inclusion Committee

### High Performance Director

Andrew Wilson

[cec.hpd@climbingcanada.ca](mailto:cec.hpd@climbingcanada.ca)

National Team Coaching Staff

National Youth Team Coaching Staff

High Performance Committee

### Events Coordinator

[cec.comps@climbingcanada.ca](mailto:cec.comps@climbingcanada.ca)

#### Competition Officials

- Technical delegate
- Jury President
- CEC Judge
- Chief Route Setter
- Assistant Route Setter

Competition Committee

Technical Sub-Committee

Events Sub-Committee

Route Setting Sub-Committee

### Athlete Commission

President: Stacey Weldon

[cec.athletesrep@climbingcanada.ca](mailto:cec.athletesrep@climbingcanada.ca)